



LG C6 FRONT TOW HOOK



Parts Inventory:

1. Tow Eye
2. Tow Eye jam nut
3. Frame mount
4. hardware kit (4 bolts, washers and nuts)

Instructions:

Prep:

Un-pack all of your items and inspect for any damage. Be sure to report anything wrong as soon as you receive your package.

Install

You will need to raise the front of the car and support with jack stands and remove the front wheels, as the nose will have to be removed. Remove the front fascia and bumper impact material. See Chevy service manual if you have questions on how to do this.

NOTE FOR STEEL FRAME CARS There is a small piece of steel at the ends of the front bumper support that are spot welded and need to be removed before you are able to install the hook. See figure 1. Once these have been removed you will notice a hole already in the bumper support when looking up from the bottom of the car.



Figure 1: Detail for steel frame cars



Figure 2: Hook mounted on driver side

Drill this hole open to 3/8". Now use this hole to place the location of the mount to the car, either passenger or driver side. Using one of the bolts, secure the base to the car. Use a magnet or long needle nose pliers to then place the washer and nut onto the bolt from inside the bumper support. Tighten the first bolt down, then you can drill the other remaining three bolt holes into the bumper support.

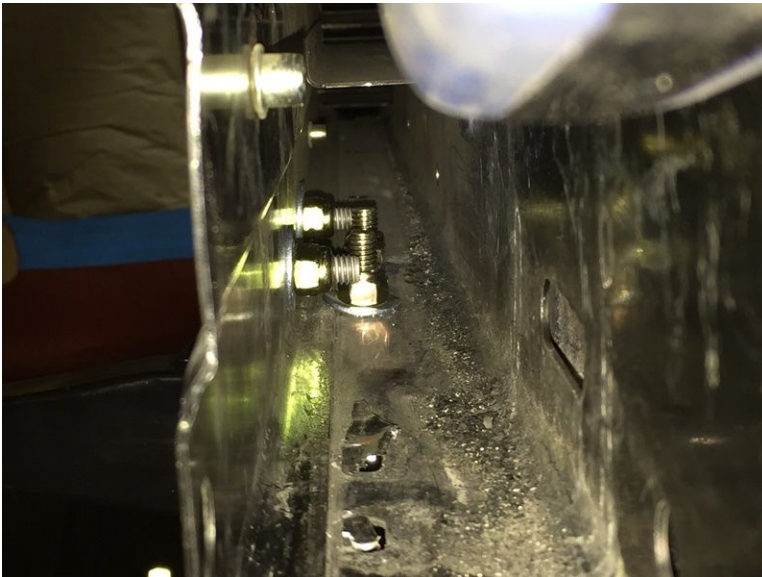


Figure 3: All four bolts drilled and tightened

Once the base has been attached remove the tow eye (if it is already installed). Re-install the bumper impact material and trim if needed.

You will have to trim some of the radiator scoop and also a few bars from the grill opening to fit as shown in the figure below.

Screw the eye into the mount and secure.

Once you are finished, the hook should appear like the following:



Figure 4: Hook mounted in Z06/GS/ZR1

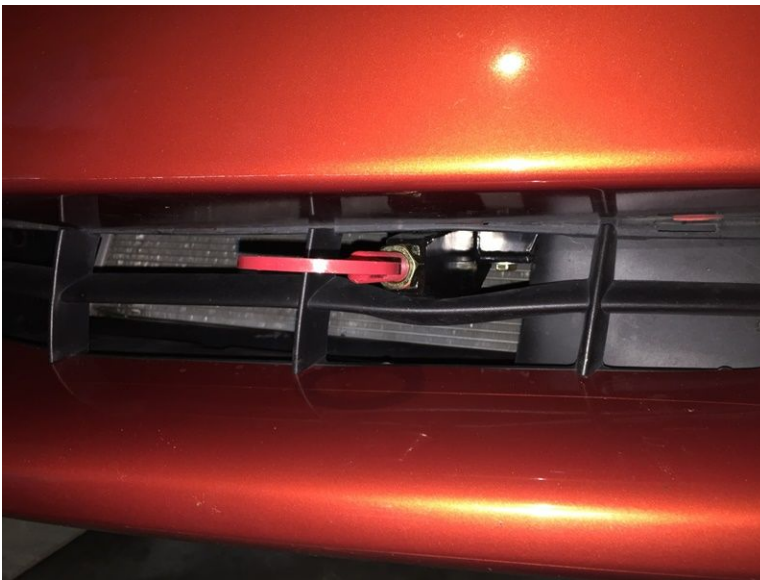


Figure 5: Hook mounted in base C6

Sergio De La Torre
President LG Motorsports



LG Motorsports is not responsible for any improper install, modification to product, or any changes made by installer to product. Any welding or modification will void any product warrantee. LG Motorsports or the dealer is not liable for any loss, damage, or injury due to the direct or indirect use of this product. These components are intended for off-road use only and are not intended for use on street legal, pollution controlled vehicles.

*Some pictures courtesy of DSOMZ51 – Corvette Forum